

## TaHoma® from Somfy, the application that runs the whole house

Somfy has developed the TaHoma® box for centralised control and management of the house from a smartphone, tablet or computer connected to the internet.

The core component of Somfy home automation is the TaHoma® Box, wirelessly communicating with all the equipment in the home (closures, shutters, screens, lights, gate, garage door, heating, alarm, cameras, sensors and more) with one, intuitive, user-friendly interface.

New functions and new appliances can be added easily at any time, giving access to a whole range of services.

### With TaHoma® from Somfy, life just got much easier!

#### ... Comfort

Lower the patio awning, shade the pergola, open and close curtains, lower external blinds, angle the external venetian blinds, open the roof window, activate lighting, control the whole house from a computer or a smartphone:

**it's really practical!**

#### ... Security

Open garage door, close the gate, lock the entrance door, close roller shutters, activate the alarm, detect smoke or an intruder, keep an eye on the house:

**it's reassuring!**

#### ... Energy savings

Manage lights, control electrical appliances, adjust heating, monitoring energy consumptions without thinking about it:

**it's smart!**



### TaHoma®, technology to live with

**Simple** The TaHoma® box radically simplifies how the home is controlled.

**Wireless access**, it fits into any configuration: newbuild or renovation

**Upgradable** It adapts to changing needs and consumer budgets.



# TaHoma® : the Somfy solution to the



External awning /  
Pergola and Screen  
Sunea screen io – Pergola io



Roof  
window

**VELUX®**



Patio awning

Standard awning, with case and cassette: **Sunea io**

One-piece awning: **Sunilus io**



Lighting

**niko**

Somfy radio receiver



Roller shutter

**Oximo io**

**Multi-protocol** The TaHoma® box ensures ensures compatibility with the main building communication protocols: io-homecontrol®, RTS®, Honeywell protocol, etc., and any others that come along.



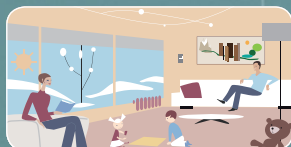
**TaHoma® Box**

## SCENARIOS

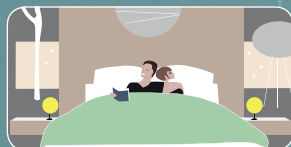
Scenarios make it easy to define, programme and modify at will and with a single click of the remote control, a series of commands. You create and set in motion scenarios which adapt to your lifestyle.



Home sweet home in summertime



A milder winter



Good night!



Good morning!



Welcome home

# connected home



External Venetian blind  
**J4 io**



Garage door

Sectional and up and over door: **Dexxo Pro 3S io**

Roller door: **Rollixo io** (automatic control)



Wireless alarm  
**Protexial io**



Heating

 GROUPE  
ATLANTIC

**Honeywell**



Entry door  
**Lock Controller io**  
Receiver for powered locks



Gate

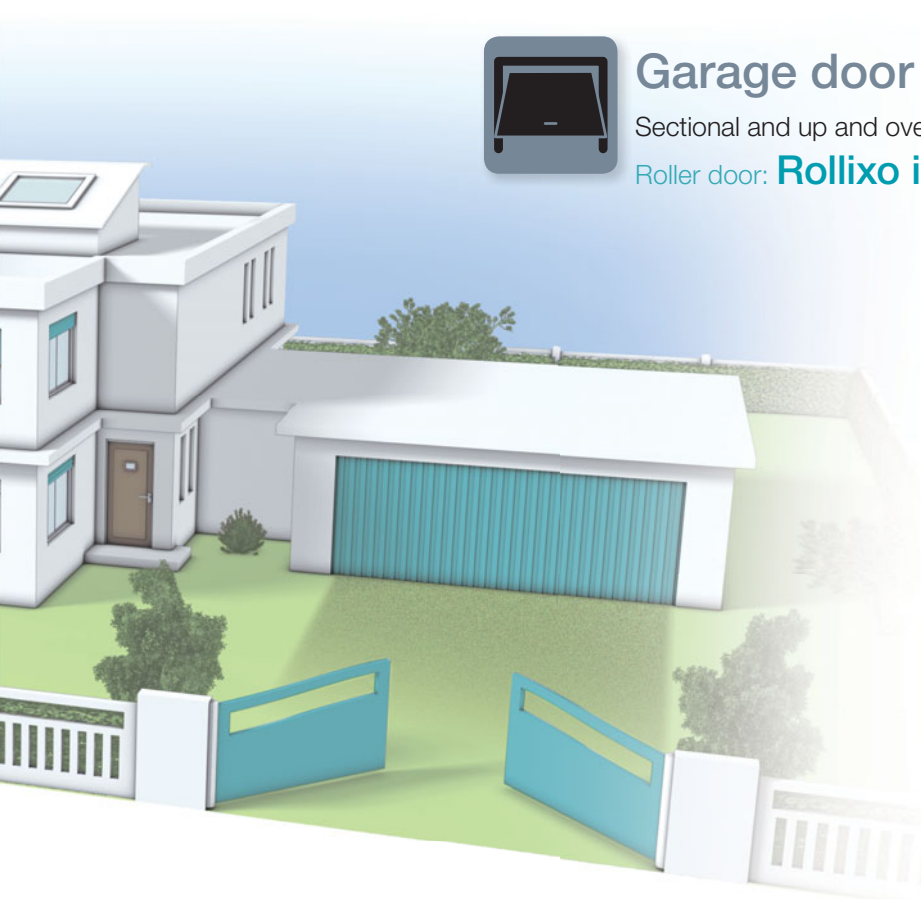
Swinging gate: **Axovia MultiPro 3S io**

**Ixengo 3S io**

Sliding gate: **Elixo 500 3S io**

**NEW**

**Invisio 3S io** (motor built into pillar)



Leaving rapidly



Going on holiday



From a distance - smartphone



From a distance - check and close



From a distance - unlock

Somfy has developed a range of controls, automatic systems, timers and sensors to supplement the system installed and make the home more comfortable, safer and cheaper to run. All compatible with the TaHoma® box!

## COMFORT

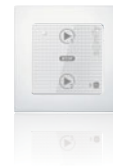
### ► Controls



**Smoove io**  
Wall-mounted touchscreen control unit.  
3 finishes and 8 frames for the modules to suit any kind of décor.



**Easy Sun io**  
Interactive remote control with feedback to combine several devices so they can be operated together.



**Scenario starter**  
Favourite scenarios, programmed on TaHoma® can be recorded and run.

### ► The house clock



**Chronis io**  
Easy to use, with simple control of the motor-driven equipment, programmed with timings.  
**NEW** When away, it simulates presence in the home.

### ► Wind sensors



**Eolis Wirefree io / Eolis Wirefree 3D io**  
When the wind gets up, the external awnings fold back and are protected (window awnings or patio awnings).

### ► Global home management



**TaHoma® Pad io**  
To control and supervise io-homecontrol® home equipment.  
The TaHoma® touch-screen control unit can be placed wherever it is needed.

## SAFETY

### ► Pocket remote controls



To save time, so nothing is forgotten, pocket remote controls **Keytis 4 home io** to open and close the garage door, gate, roller shutter, electric locks or to turn lights on or off in the house!  
Central locking system with one click on the "home" button.



Another version: **Keytis home io alarm** for full or partial activation of the alarm in protection zones.  
Central locking system with one click on the "home" button.



The practical **Keygo io** pocket remote control clips to a keyring, or slips into the glove box of the car to open or close the gate, garage door, etc.

### ► Wireless alarm



**The Protexial io** alarm combines the best of current alarm technology.  
This made to measure, scalable system, connected to the motorized or automated appliances increases the comfort, the lighting and security of the home.

Internal and external **cameras** monitor the home and keep an eye on it.



Several TaHoma® compatible **detectors** report on comings and goings around the house, and detect the presence of smoke.



## ENERGY SAVINGS

### ► Sensors

Wireless sunlight and temperature sensors, making the home more energy-efficient:



**The Sunis Wirefree io sun sensor:**  
In summer, as soon as sunlight strikes the façade, the sun screens close automatically to keep the house cool.



**The Thermis io temperature sensor:**  
To turn on/off heating; activate sun screens according to the set point temperature defined in TaHoma® interface.



The TaHoma® interface gives a real time display of energy consumption for each appliance (monitoring the various sensors, weekly or annual consumption).



io-homecontrol® provides advanced and secure radio technology that is easy to install. io-homecontrol® labelled products communicate with each other, improving comfort, security and energy savings.

www.io-homecontrol.com

www.somfy.com