

TEXTILE -REINFORCED - PAINTABLE RELIEF DECORATION

Anaglypta®

Since 1887

SUPAGLYPTA

Finest quality, tough, durable & wear resistant wallpaper

REINFORCES WALLS AND CEILINGS - DISGUISES IMPERFECTIONS - SUITABLE FOR HIGH TRAFFIC AREAS
ALLOWS WALLS TO BREATHE - EASY TO APPLY - EXCELLENT SURFACE FOR PAINT
CONTAINS NO PVC - PAPER FROM WELL MANAGED SOURCES



INSTRUCTIONS - SUPAGLYPTA

Check all rolls are undamaged and have the same batch number. After hanging 2 or 3 lengths check to ensure that no defects are evident. We cannot accept claims for paper hung in excess of one roll where the defect is visible before hanging. All claims must be supported by returned samples and labels. If in doubt please contact our Advice Line. Your statutory rights are not affected.

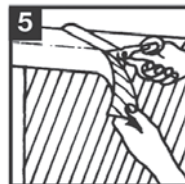
Preparation

- Surfaces painted prior to 1960 may contain lead pigments, special precautions should be taken during preparation.
- To minimise the hazard in event of fire, do not hang wallcoverings over polystyrene veneers.
- Keep room warm and well ventilated.
- Turn electricity off at the main fuse box when working around switches, sockets, light fittings etc.
- Remove any existing loose wallcoverings or linings.
- Surfaces must be clean, smooth and dry.
- Cure areas affected by either damp or mould at the source.
- Pre-treat new plaster or other absorbent surfaces with a fungicidally protected adhesive or 'size'.
- Roughen gloss painted surfaces with glass paper. Lining paper is recommended for uneven or contrasting surfaces.
- Freshly painted surfaces should be left for at least 3 days prior to application.
- We recommend a good quality ready mixed adhesive for this heavy high quality product. If a flake adhesive is preferred, ensure it is of good quality and mixed in accordance with the manufacturers directions.

Application Guidance

For Walls.

1. Measure 50cm (20") out from a corner. Avoid an area with windows or other details for the first strip if possible. Using a plumbline as a guide mark a vertical line from ceiling to floor. N.B; Always ensure the width of the roll will be wide enough to fill the gap between the line and the corner, especially important in older properties where corners may not be perpendicular.
2. Cut strips to length allowing extra for pattern match & trimming. Apply adhesive ensuring the entire reverse is well covered.
3. Fold pasted sides inwards and leave to soak for 15 minutes. If the soaking time is extended be careful to ensure the paste does not dry out before application - apply extra paste if necessary.
4. Position the paper on the wall following the guide line. Brush down the paper starting at the center, brushing out towards the edges. N.B Take care to only apply very light pressure when smoothing out the paper. Use a good quality brush, other implements such as rollers and spatulas may permanently flatten the surface.
5. Crease and mark with a pencil before trimming to size at top and bottom or other features such as door frames.
6. Remove excess adhesive from the surface immediately with a damp sponge.
7. Ensure subsequent lengths are applied in the correct direction use butt joints matching patterns as necessary. Ensure all lengths are firmly adhered.
8. This product can be painted once the adhesive has fully dried out, normally after 24-48 hours.



F Bien que nous ayons pris toutes les précautions nécessaires pour garantir que ce produit vous parvienne en excellent état, vous êtes responsable de vérifier qu'il est exempt de tout défaut et que le papier peint est correctement posé. Veuillez renvoyer tout matériau défectueux au fournisseur accompagné de l'étiquette. Aucune responsabilité ne sera acceptée après la pose.

- Préparez les murs et assurez-vous qu'ils sont lisses et propres. Apprêtez les surfaces absorbantes.
- Mesurez et découpez les lés de façon à pouvoir agrafer les extrémités après collage.
- Tracez une ligne verticale sur le mur.
- Encollez le dos du papier peint avec un adhésif contenant un fongicide.
- Répétez le côté encollé sur lui-même, laissez imbibber pendant 15 minutes puis posez verticalement.
- Alignez les motifs (le cas échéant), lissez et agrafer les extrémités excédentaires des lés.

D Obwohl seitens des Herstellers angestrebt wird, daß der Käufer dieses Produkt in einwandfreiem Zustand erhält, ist der Käufer dafür verantwortlich, das Produkt auf Fehler zu prüfen und daß die Tapete vorschriftsgemäß angebracht wird. Fehlerhaftes Material sollte mit Etikett an das Lieferunternehmen zurückgegeben werden. Reklamationen können nach dem Anbringen der Tapete nicht angenommen werden.

- Unebenheiten der Wand sind auszubessern, und die Wand sollte in glattem und sauberem Zustand sein. Absorbierende Flächen grundieren.
- Ausmessen, Bahnen zuschneiden und Zuschnitt einberechnen.
- Auf der Wand senkrechte Linie ziehen.
- Rückseite der Tapete mit Kleister (enthält Fungizid) einstreichen.
- Eingestrichene Seite nach innen falten und 15 Minuten einwirken lassen. Senkrecht anbringen.
- Muster (falls vorhanden) angleichen, Tapete ausstreichen und überstehende Tapete abschneiden.

E Aunque se han tomado todas las medidas necesarias para garantizar que este producto llegue a sus manos en perfectas condiciones, es su responsabilidad comprobar que el producto esté en buen estado y que el papel quede bien pegado. Si no está satisfecho con el estado del producto, devuélvalo a su proveedor con la etiqueta. No aceptamos responsabilidades después de haber pagado el papel.

- Aise y limpie la superficie de las paredes. Prepare las superficies absorbentes.
- Mida y corte los segmentos dejando espacio suficiente para el recorte.
- Marque una línea vertical en la pared.
- Engrude la cara posterior del papel con un adhesivo que contenga un fungicida.
- Doble hacia el interior la cara adhesiva, espere de 15 minutos y pegue en forma vertical.
- Iguale el patrón de la superficie (si lo hay), aise y recorte el material sobrante.

For Ceilings. (Application is similar to wall application)

1. If a ceiling is not square it may be advantageous to consider hanging the strips across the shorter side for easier handling.
2. Draw a guide line 50cm (20") from the edge of the ceiling.
3. Cut strips to length allowing extra for pattern match & trimming. Apply adhesive ensuring the entire reverse is well covered.
4. Fold pasted sides inwards and leave to soak for 15 minutes. If the soaking time is extended be careful to ensure the paste does not dry out before application - apply extra paste if necessary.
5. Position the paper on the ceiling following the guideline. Brush the paper onto the ceiling starting at the centre and brushing out towards the edges, expelling all air bubbles. N.B Take care to only apply very light pressure when smoothing out the paper. Use a good quality brush, other implements such as rollers and spatulas may permanently flatten the surface.
6. Crease and trim at edges.
7. Remove excess paste immediately with a damp sponge.
8. Ensure subsequent lengths are applied in the correct direction use butt joints matching patterns as necessary. Ensure all lengths are firmly adhered.
9. This product can be painted once the adhesive has fully dried out, normally after 24-48 hours.



PASTE THE WALL, REINFORCED,
TOUGH & DURABLE



REINFORCED, TOUGH & DURABLE



TOUGH & DURABLE



DURABLE



LUXURY TEXTURED VINYL



HIGH QUALITY LINING RANGE