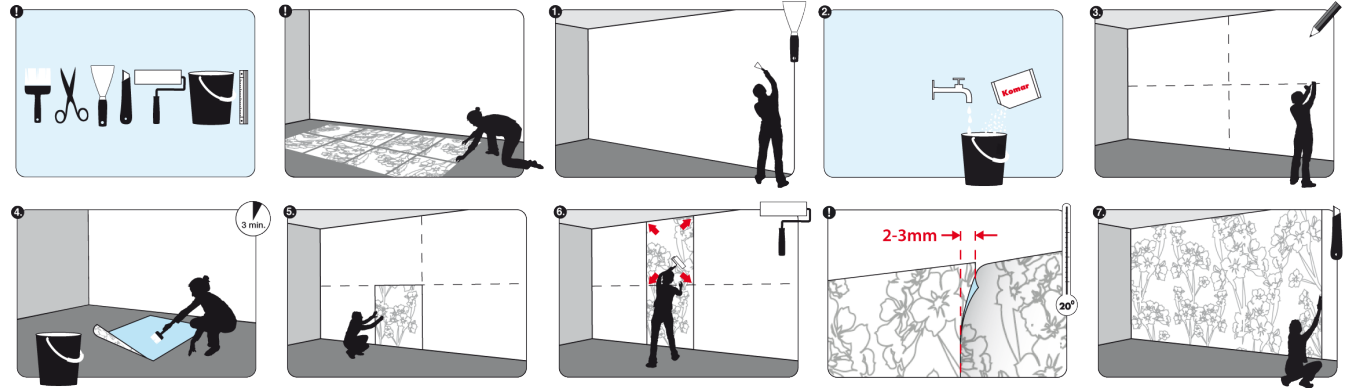


Manual Photomurals

(All the motifs have been chosen so that they can be trimmed on every side without detracting from the overall effect.)



1. Surface Preparation

The wall needs to be primed in the same way that it would be before hanging wallpaper: the surface should be clean, smooth and non-greasy – any oil-based paint must be ground off, holes and crack should be filled. In order to achieve optimal drying, the surface should be able to take on moisture.

2. Paste

Use a commercial standard wallpaper paste and follow the relevant usage instructions.

3. Draw Guidelines

As many walls are not perfect right angles, we recommend that you begin pasting the paper from the centre of the wall. To achieve this correctly, you will need a horizontal and vertical guideline. Draw these directly onto the wall in pencil with the assistance of a water level and plumbline.

4. Pasting the Sheets

Take Sheet 4 and apply the paste carefully with even strokes. Take extra care to paste the edges.

Important: Allow the paste on all panels to soak for 3 minutes and do not lie the pasted sheets on top of each other.

5. Hanging

Place Sheet 4 along the guideline and apply pressure in strokes from top to bottom until flat and the air is pushed from the middle out from the side. Then hang Sheets 6, 2 and 8, and then Sheets 3, 5, 1 and 7, in place. Allow the sheets to overlap by 2-3 mm.

6. Drying

In order to avoid shrinkage gaps at the connecting edges or rips in the paper, the paper must be allowed to dry slowly. Ideally, the room temperature should be around 18-20°C and you should avoid drafts of air through the room (keep windows closed, and use moderate heating in winter).

7. Trimming the Edges

Trim the excess edges with a carpet knife after the paper has dried.

Important Information:

We make every effort to deliver a top quality product in perfect condition, by applying strict quality control procedures. Technical limitations, however, may result in small colour differences. Before applying paste to the motif, you should lay out the sheets and examine them for colour variations. When a valid reason for complaint exists, we ask you to return the sheets before applying the paste, as Komar is not liable for any costs incurred in pasting.