



TaHoma®

for life's connected moments

somfy®



for life's connected moments...

A breeze brings cheerfulness and comfort over the connected home!  
Somfy invents a new way of living in your home.

Let TaHoma services support you to live your unique, intensely real moments...  
life's intensely connected moments.

## Get the TaHoma Attitude!

TaHoma is the companion that provides you with the services you need to remotely programme, centralise, control and guide all the connected equipment in your home, whether you live in a flat or house.

TaHoma has been designed to make life simpler for you. You are free from your day-to-day limitations through this straightforward, easy-to-use device that suits the way you live.

TaHoma makes running your home more comfortable, more secure and more economical. It gives you much more time to enjoy your day to the full!





(7h30)  
Let's go...

Security

Comfort

Energy  
saving

“

...on the way to the office,  
it's going to be a busy  
day....

”

Sitting in the car, I run  
the **“GO” scenario**.\*

At home, the shutters close,  
the heating switches to ECO mode  
for the day, all the lights are turned off  
and the gate closes behind us.

If one of us has forgotten the house keys,  
or if the postman wants to leave a parcel  
today, we open the garage door remotely  
from our smartphones.

**With TaHoma, you live your connected  
life moments to the full, at home  
or away from the house.**

TaHoma<sup>®</sup>  
COACH



See details on how  
to create this scenario at  
[www.tahomacoach.com](http://www.tahomacoach.com)

\*A scénario lets you benefit from life's connected moments, by running one or more of the connected devices in the home, simultaneously or sequentially.



(Sunday)  
*Cocooning...*

“

...a family  
afternoon.

”

Comfort

Energy  
saving

From my tablet, I run the **COCOONING scenario**, programmed to adjust the temperature of my home.

My connected heating system immediately switches to COMFORT mode, and the living room temperature is optimized by opening the shutters wide.

The shutters will close at sunset to keep the house warm, just as I have programmed them from my smartphone.

My home is properly heated, and I monitor my energy consumption on my tablet, giving me peace of mind.

With TaHoma, I benefit from my connected life moments to the full, in good company.

TaHoma<sup>®</sup>  
COACH



See details on how  
to create this scenario at  
[www.tahomacoach.com](http://www.tahomacoach.com)





(14 July)  
*Stress-free holidays!*

“

...relaxing far from home.

”

Security

Comfort

When we leave, we start the **HAPPY HOLIDAYS scenario**: the alarm turns on, the heating switches to ECO mode, the presence simulation programme starts (the connected shutters open in the morning and close in the evening, the connected lights turn on and off randomly every day).

When we are on holiday on the other side of the world, we can use our smartphone to make sure that everything is fine back home.

**With TaHoma, we live all our connected moments to the full with the family.**

**TaHoma<sup>®</sup>**  
**COACH**



See details on how  
to create this scenario at  
[www.tahomacoach.com](http://www.tahomacoach.com)



The connected home from Somfy

## ● Simplicity

- Simple to install: no work needed in your home projects.
- Simple to use: 92% of users are satisfied and would recommend TaHoma to their friends and family (Survey carried out among 626 users).
- Instant access to your home, wherever you are in the world. If necessary, warning message sent by SMS or email to check on your connected home and deal with unexpected incidents.

## ● User-friendly

- Customise your interface to configure your connected home (number of rooms, number of floors, exterior, etc.).
- Intuitive environment designed with and for users.
- Centralise all your remote controls on your smartphone or tablet to run all the connected equipment in the home.
- Wireless control using io-homecontrol® radio technology.

## ● Compatibility

- Multi-device: over 100 Somfy connected devices compatible with TaHoma.
- Multi-brand: connected home devices and appliances from the major brands are compatible with TaHoma.

# TaHoma+

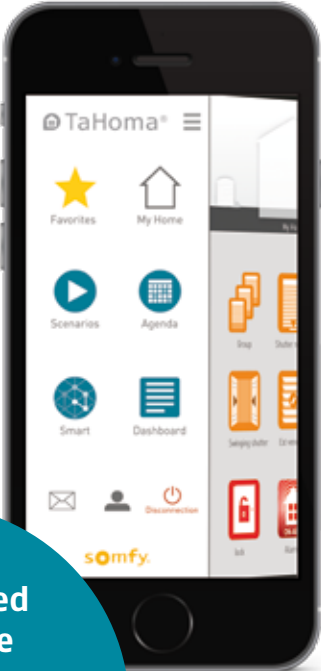
And because a connected home project is developed in stages—to suit your priorities, preferences and budget—TaHoma is completely flexible. So you can add connected devices and select services at your own pace.



# With TaHoma, my home becomes connected



A simple, interactive interface.

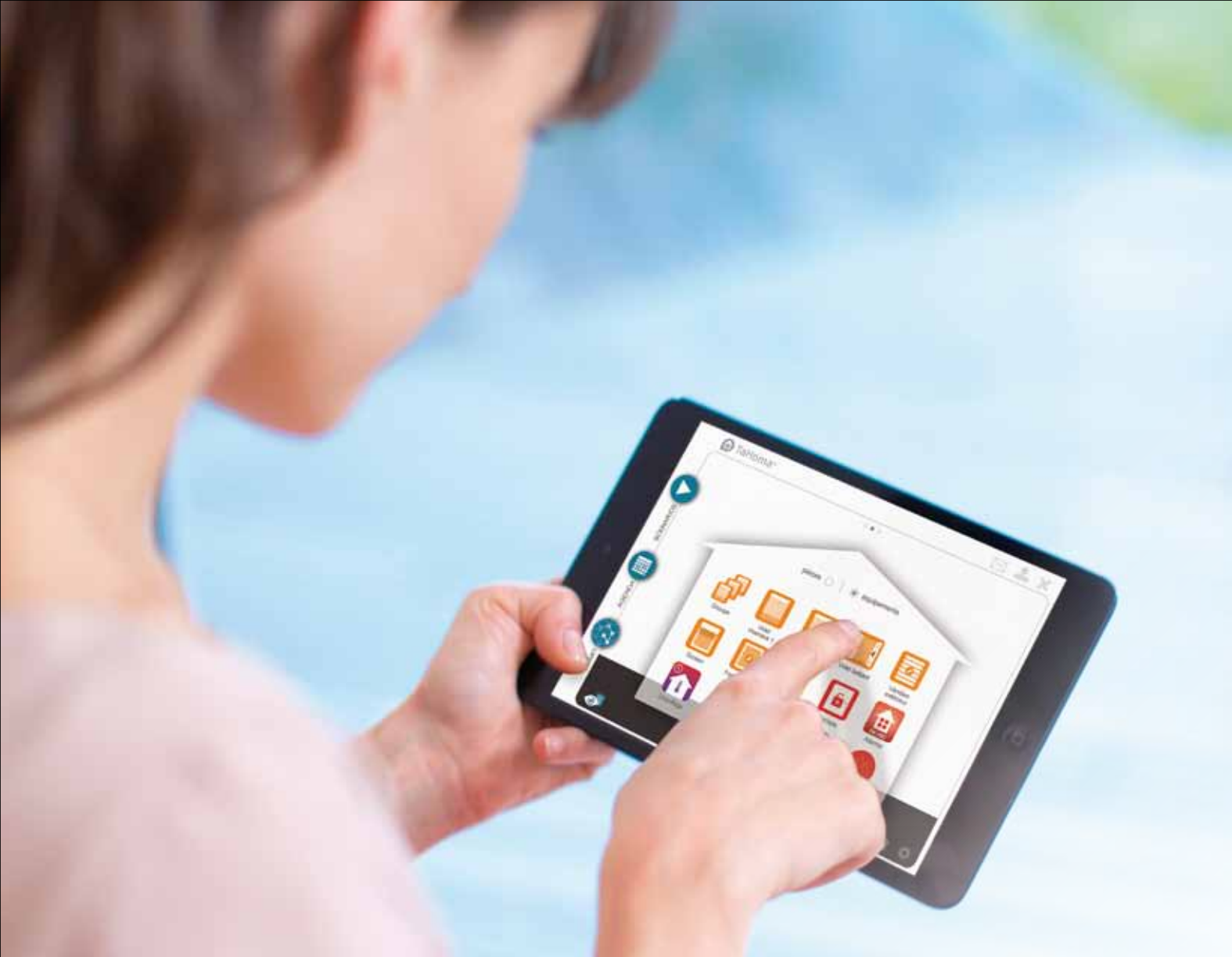


My connected home—here and everywhere else—from my smartphone, tablet and computer.



The TaHoma® application is available for Android and iOS.





TaHoma, the connected home at a glance!

## TaHoma: 3 simple and intuitive menus



### MY SCENARIOS

**I create my own connected life moments**

- I specify simultaneous operation of several connected devices.  
E.g.: "morning start" scenario which closes all roller shutters and roof windows and turns off the lights when I leave home.
- With a simple click I run my scenarios.



### MY SCHEDULE

**I create my own scenario schedule to suit my lifestyle**

- I create my typical days.  
E.g.: day at work/home with several scenarios that I can activate immediately or after a set time (up to 20 different typical days).
- I can programme a week with different days.  
E.g.: "working" days from Monday to Friday and "weekend" days Saturday and Sunday.



### SMART

**I enhance my scenarios with sensors**

- I manage my scenarios with sensors to optimise the effectiveness of my connected equipment: sensors for sunlight, temperature, openings, smoke or presence.
- I can create a conditional scenario.  
Ex.: if my weather sensor reads a particular temperature then my roller shutters close automatically.

### The Tahoma box, the heart of your connected home

It is designed to be discreet, and always at your service! Connected to your ADSL box, it gives you access to the **Somfy Cloud**.







# There is a TaHoma solution to fit every project

TaHoma packages are designed to provide you with a customised range of services for your connected home that are easy to use and affordable. They offer you a choice of functionalities and services to help you set up your scenarios, from the simplest to the most complex.

	TaHoma	TaHoma 1 <sup>ST</sup>
The TaHoma box	•	•
2-year warranty included	•	•
Telephone support	•	•
Tahoma coach included	•	•
Automatic, free updates for TaHoma (more functionalities, more compatible devices for your house, etc.)	•	•
Access to TaHoma from a smartphone, tablet or computer with internet connection using a free app	•	•
Storage of photos from your surveillance cameras in the secure Somfy Cloud	•	•
Access to SMART conditional scenarios (e.g.: If the outdoor temperature is ≥ 25° C, lower the roller shutters)	•	
Access to sensor and detector logs	•	
Warnings received 24/7: - by email: unlimited (up to 3 email addresses linked to your TaHoma account) - by SMS: 30 text messages (telephone no. entered when Tahoma is activated) See TaHoma+ option	•	

## TaHoma+ options

even more connected life moments!

- +

**PROGRAMMING and SERVICES OPTIONS**  
Using TaHoma 1<sup>st</sup> Pack, access advanced programming (scenario, smart schedule) and all of the TaHoma + Pack functions and services = 149 € inc taxes
- +

**SMS FOR YOUR WARNINGS**  
Choose the SMS Pack  

10 SMS: + 4.90€ inc taxes

35 SMS: + 8.90€ inc taxes

100 SMS: + 19.90€ inc taxes
- +

**WARRANTY**  
Add the extended warranty + 2 years + 49 € inc taxes

To find out all you need to know about the various TaHoma packages, go to [www.somfy.xxx/TaHoma](http://www.somfy.xxx/TaHoma) or contact your nearest Somfy connected home specialist dealer.

## The General Terms and Conditions of Sale

# The connected home is so simple with

TaHoma<sup>®</sup>  
COACH

This is the 1st support program for the TaHoma connected home.

With TaHoma Coach, Somfy guides you step by step through a gradual learning program, so that:

- you quickly adjust to the responses and best practices for the connected home
- you gradually learn to use your TaHoma interface
- you easily create scenarios\* for your connected life moments

Find the tutorials, videos and details on the TaHoma COACH program at [www.somfy.fr/TaHoma](http://www.somfy.fr/TaHoma)

# TaHoma, naturally compatible with Somfy connected equipment...



Somfy is constantly innovating to bring you more high-performance, intuitive and easy-to-use equipment, for everyday life. This gives you a whole range of connected solutions, productions, sensors and detectors to suit your preferences, for connected life moments!

## ...and also other major connected home brands.



The DolceVita home automation box and the application for Tahoma services are compatible. This gives the users of the connected DolceVita GDF SUEZ thermostat access to TaHoma functionalities, without changing their home automation box. For more information, please visit [www.gdfsuez.com](http://www.gdfsuez.com)

Compatible protocols



Protocole Honeywell



**Somfy**

**International Business Communication Department**

50 avenue du Nouveau Monde

BP 152 - 74307 Cluses Cedex

France

T +33 (0)4 50 96 70 00

F +33 (0)4 50 96 88 38

**[www.somfy.com](http://www.somfy.com)**

